



Durability - Performance - Affordability

DPM 201

Digital Power Meter



The DPM 201 provides the operator with live speed, torque and power data. The DPM 201 also retains peak observed values for all three readouts.

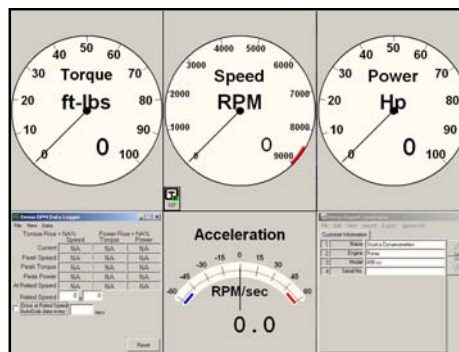


Speed Pickup Assembly



Load Cell Assembly

- Large L.E.D. Display
- Zero Torque with the Touch of a Button
- Includes Strain Gauge Load Cell and Magnetic Speed Pickup



Data Logger software is now standard with the DPM 201. The Data Logger is a Windows XP based software program that allows the user to view engine speed, torque and horsepower on screen, "auto-grab" data as often as once per second, and print out simple graphs and spreadsheets.

- Display, Record and Save Engine Data
- "Auto-Grab" Data Function

To get information on the DPM 201 Digital Power Meter and available Automatic Load Control visit www.stuskadyno.com or call 1-262-252-4091



www.stuskadyno.com

STUSKA DYNAMOMETERS

Corporate Office: N60 W14630 Kaul Avenue • Menomonee Falls, Wisconsin, 53051, USA
Ph: 262-252-4091 • Fax: 262-252-4700 Contact: info@stuskadyno.com

DYNAMOMETER EXCELLENCE SINCE 1963

