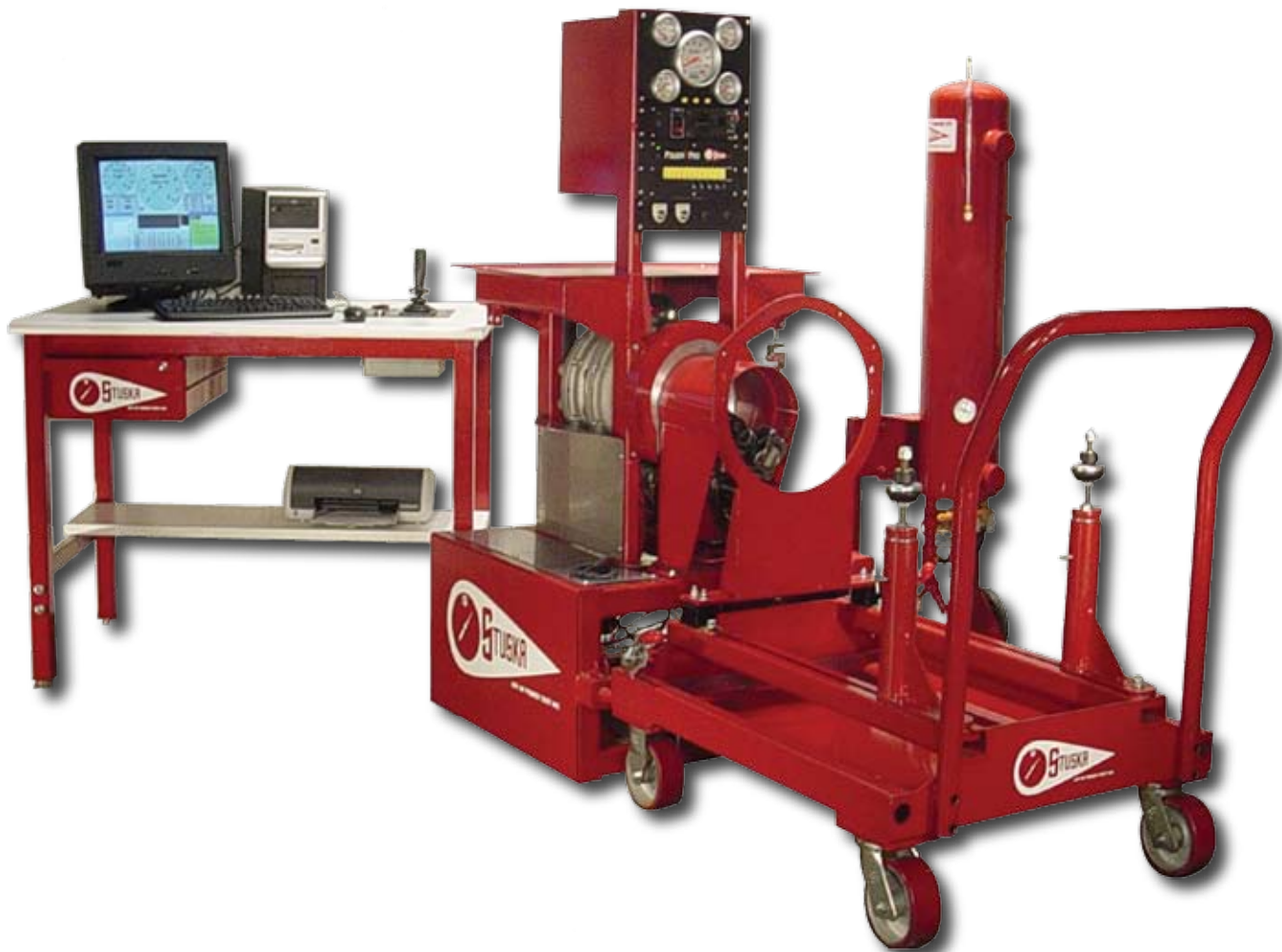


TrackMaster LC



DYNAMOMETERS

A DIVISION OF POWER TEST INCORPORATED

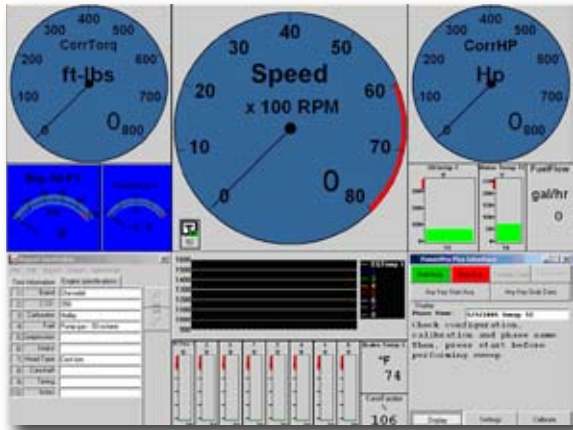
Stuska TrackMaster LC

The Stuska TrackMaster dynamometer system offers exceptional engine testing capabilities with proven water brake technology and a sophisticated, yet easy-to-use, data acquisition package.

The heart of the TrackMaster system is the proven Stuska water brake dynamometer. Stuska dynamometers were introduced to the market in 1963 as a low cost, durable, high performance dynamometer. The fact that thousands of these dynamometers have been sold and many systems are still in operation after more than 20 years is proof of their reliability. Available with either the 800 HP (XS-111) or 1600 HP (XS-211) water brakes, the Stuska TrackMaster system is constructed to meet your needs and is the most affordable turn-key dynamometer system on the market.

PowerPro

The PowerPro data acquisition system is a powerful desktop PC operating on Microsoft Windows® XP Pro. Data collected by the Sensor Interface Device (SID) is transmitted to the Commander Computer where it is displayed in an easy-to-read and fully-customizable virtual dashboard. Dynamometer and engine data can be viewed on the PowerPro Main Display screen, while data is automatically collected and calculated for post-test review.



PowerPro Commander Virtual Dashboard

PowerPro Features

- Operator-friendly "Virtual Dashboard" has easy-to-read on-screen displays
- Fully configurable sensors with color changing displays to quickly indicate alarm conditions
- Customize sensor units, ranges, alarm values, and even the language of display if desired
- Automatically record data for easy diagnostics, including graphing and table formats
- Completely customizable data reporting, including company logo, workshop information, customer information, and engine manufacturer specifications
- Easy-to-use menu system minimizes operator learning curve
- Save data to hard drive, send customer reports via e-mail, and print out diagnostic data on the spot

The collection of data is just the start. PowerPro monitors the acceleration rate of the dynamometer and corrects the data based upon the rate of change from one reading to the next. What this means is that if an engine is swept quickly, slowly, or inconsistently, the PowerPro software compensates for the changes and standardizes the results with inertia compensation. Back-to-back repeatable pulls prove it. The result is no more lost data caused by accelerating the engine too fast.

Once the data has been recorded, it is presented in neat, easily understood graphs, tables, and spreadsheets. Data can also be viewed on-screen via the software's View/Chart feature. Furthermore, data can be exported into Microsoft® Excel spreadsheet software. All tests can be stored and easily recalled. The reports can even be e-mailed to others. For professional looking results, color reports are easily printed and can include your company logo.



Automatic Load Control

Stuska's revolutionary Automatic Load Control allows the operator to perform smooth, repeatable tests, while maintaining the engine's natural sweep.

Available with the QuikStik throttle control (shown) or as a stand alone unit, Stuska's Automatic Load Control and PowerPro make an unbeatable combination.

TrackMaster Features



Water Brake Dynamometer

The heart of the TrackMaster LC dynamometer system is the Stuska water brake. Available in 800 HP (XS-111) and 1600 HP (XS-211) versions.



PowerPro Commander PC

A standard desktop PC operating on Windows® XP Pro, the PowerPro software displays, graphs, and saves all test data, which is shown live on the configurable virtual dashboard.



QuikStik LC Joystick

Avoid dealing with complex tuning parameters, the QuikStik LC features easy one-handed operation and Automatic Load Control to achieve smooth, repeatable testing, while maintaining the engine's natural sweep.



QuikStik Throttle Actuator

The Throttle Actuator is directly controlled through the QuikStik Joystick. This means that the operator is always in control of the engine.



Sensor Interface Device

The SID allows a series of high and low temperature, fuel flow and pressure sensors, as well as general purpose auxiliary and engine torque and rpm inputs to be collected and transmitted to the PowerPro Commander.



Cooling Column

A thermostatically controlled engine cooling column is provided with every system. The integrated rolling stand allows for rapid removal and placement flexibility. Optional pressurized cooling column available.



Integrated Starter/Flywheel

The TrackMaster Base Module is equipped with an integrated high torque electric starter and flywheel, eliminating the need for an engine-mounted starter and capable of handling magneto fired, high compression, and large C.I.D. engines.



LC Pump and Controller

The LC Controller uses signals sent from the QuikStik Joystick and the dynamometer to automatically maintain desired load points and sweep rates through the application-specific LC water pump. This eliminates the need for expensive servo valves.

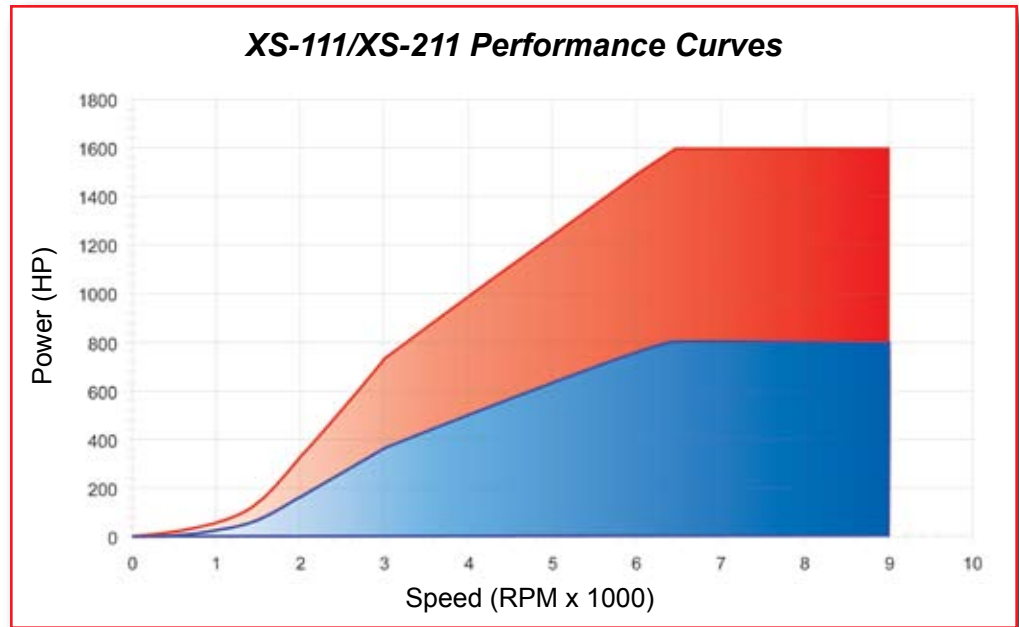


Docking Cart

The TrackMaster Docking Cart features a sturdy structural steel frame with adjustable front and rear supports. This allows the engine to be mounted without the need for a bellhousing. Simply level the engine and correct alignment is assured.

How a Water Brake Dynamometer Works

Stuska water brakes use water flow to create a controllable resistance to the engine. The greater the volume of water in the water brake, the greater the load. Stuska water brakes can easily perform continuous, steady load tests by adjusting the water flow through the dynamometer to match the desired load. Sweep tests are made even easier through the use of our QuikStik LC throttle and Automatic Load Control.



Optional Equipment

- Additional Docking Carts
- Mass Air Flow Sensors
- PowerPro Expansion
- Analog Gauge Package
- Integrated Weather Station
- Additional Engine Mounting Kits
- Oxygen Sensors

Additional sensors and options are available to customize this system to meet your testing needs!

Stuska engineers are constantly developing new products to meet the demands of current technology. The SID features 6 auxiliary inputs, 3 configurable analog and 3 configurable frequency, to allow for an extended range of testing.

Stuska Dynamometers - A division of Power Test, Inc.

- Power Test, Inc. has extensive years of experience developing and manufacturing dynamometers and data acquisition and controls. We have used this experience to develop our PowerPro data acquisition system and to further develop the TrackMaster LC dynamometer system with Automatic Load Control.
- Our staff of courteous customer service technicians are here to meet your individual business needs and make your dynamometer and data acquisition experience a positive one.
- Power Test and Stuska are committed to our customer's needs by providing on-site training at your facility.
- Power Test, Inc. has been manufacturing heavy duty dynamometers since 1976. Power Test provides a full range of engine dynamometers and single, tandem, and multi-axle chassis dynamometers. Please visit www.pwrst.com for more information about the full line of dynamometers, data acquisition, and dynamometer controls.

STUSKA DYNAMOMETERS

N60 W22700 SILVER SPRING DRIVE SUSSEX, WI 53089 USA

phone: (262)252-4091 fax: (262)246-0436

www.stuskadyno.com